

**Three Rivers  
Community  
Schools**

# Three Rivers Community Schools

- High School – New Weight Room Addition
- Andrews/Norton Renovations
- Park/Ruth Hoppin Renovations



**The SKILLMAN Corporation**  
Project Administration  
Construction Management

# Table of Contents

- Work in Progress/Completed
- Progress Photos
- Four-Week Look Ahead
- Questions



## **Work in Progress / Completed**

- Acquired building permits for High school and all four Elementary Schools.
- Completed site clearing and tree removal.
- Completed brick removal at HS.
- Completed concrete footing and walls for HS new weight room addition.
- Continued with Interior office demo.
- Started site clearing for Ruth Hoppin new addition.
- Footing excavation for Ruth Hoppin.
- Completed tree removal for Andrews.

**Committee /  
Board  
Update  
June 7, 2021**



**Three Rivers  
Community  
Schools**

**Committee /  
Board  
Update  
June 7, 2021**

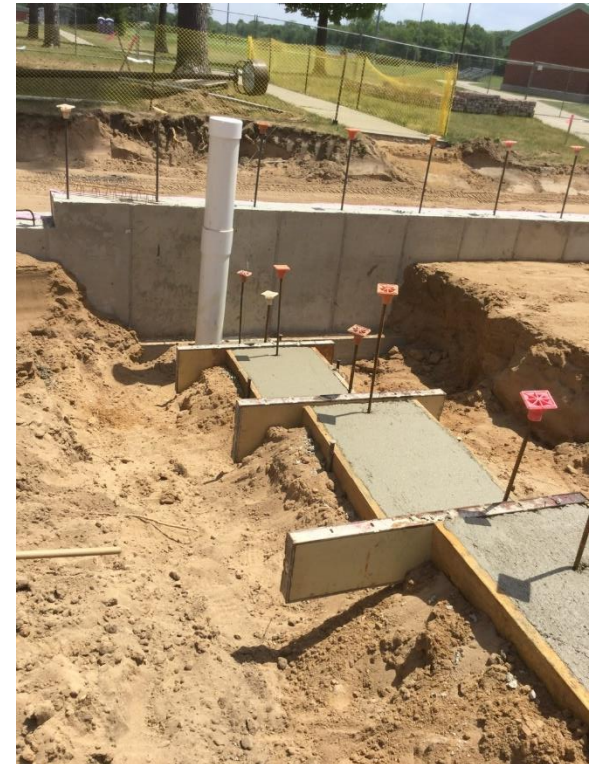


**The SKILLMAN Corporation**  
Project Administration  
Construction Management

# Progress Photos



**HS Footings/Foundations**





**Three Rivers  
Community  
Schools**

# Progress Photos



**HS Footings/Foundations**



**The SKILLMAN Corporation**  
Project Administration  
Construction Management

**Three Rivers  
Community  
Schools**

# Progress Photos



**Ruth Hoppin Demo**

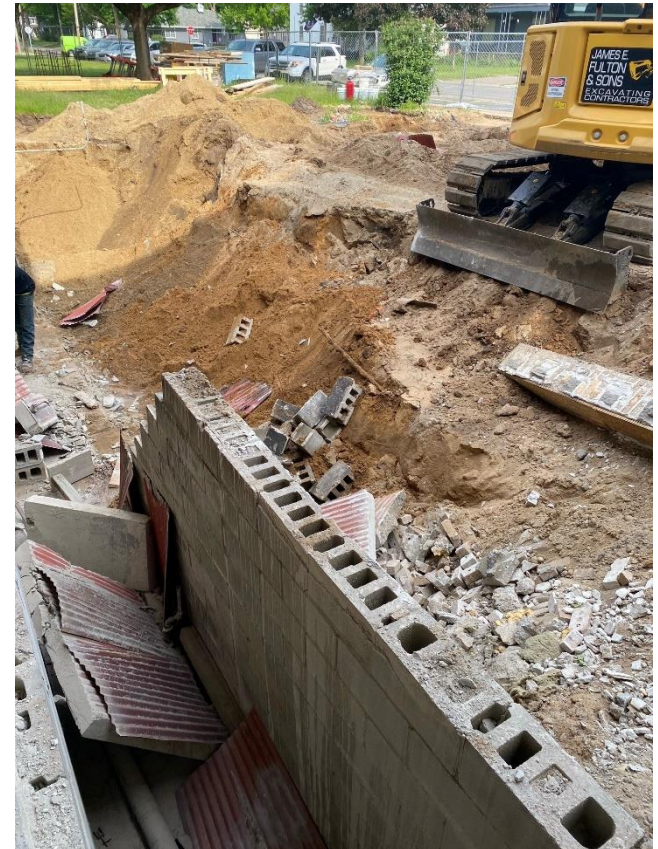




**Three Rivers  
Community  
Schools**

# Progress Photos

## Ruth Hoppin Demo



## **Four-Week Look Ahead**

- Start Interior Office demo for HS.
- Start CMU Install for HS New Addition.
- Complete footings for Ruth Hoppin New Addition.
- Start CMU Walls for Ruth Hoppin New Addition.
- Complete Office demo for Ruth Hoppin ES.
- Start Interior office demo for Andrews ES.
- Start Interior office demo for Park ES.
- Start Interior office demo for Norton ES.
- Complete house demo for Andrews ES new parking lot.





**Three Rivers  
Community  
Schools**

Questions?

**Committee /  
Board  
Update  
June 7, 2021**



**The SKILLMAN Corporation**  
Project Administration  
Construction Management