

**Three Rivers
Community
Schools**

Three Rivers Community Schools

- High School – New Weight Room Addition
- Andrews/Norton Renovations
- Park/Ruth Hoppin Renovations



The SKILLMAN Corporation
Project Administration
Construction Management

Table of Contents

- Work in Progress/Completed
- Progress Photos
- Four-Week Look Ahead
- Questions



High School New Weight Room Work in Progress / Completed

- Installed Pre-Cast Plank Second Floor Mezzanine
- Completed drywall hanging and finishing for the office
- Primed and painted first coat in the office
- Began vinyl wall covering in the office
- Began ceramic tile in F108 restroom
- Completed office VAV installation
- Completed office ductwork
- Completed office hydronic piping
- Received approved State Building Inspection for Unit J and Unit F
- Received approved Fire Marshall Inspection for Unit J
- Received State Electrical Inspection approval
- Received State Mechanical Inspection approval

**Committee /
Board
Update
August 2,
2021**



Andrews & Norton Elementary Schools

Work in Progress / Completed

- **Andrews Elementary** – Cut site for new parking lot
- **Andrews Elementary** – Completed CMU for new bathroom and Media Center
- **Andrews Elementary** – Completed parking lot curbs
- **Andrews Elementary** - Continued framing new walls
- **Andrews Elementary** – Continued electrical rough-in on new walls
- **Andrews Elementary** – Installed shoring for added beams
- **Norton Elementary** – Demoed CMU walls
- **Norton Elementary** – Installed shoring for added beams
- **Norton Elementary** – Passed underground inspections for plumbing

**Committee /
Board
Update
August 2,
2021**



Park & Ruth Hoppin Elementary Schools Work in Progress / Completed

- **Park Elementary** - Completed New CMU walls in the Media Center
- **Park Elementary** - Turned over Media Center space
- **Park Elementary** - Completed framing walls
- **Park Elementary** – Hung and taped drywall
- **Park Elementary** – Began painting the office
- **Park Elementary** - Continued MEP rough-ins
- **Park Elementary** – Began site work
- **Ruth Hoppin Elementary** – Completed abatement
- **Ruth Hoppin Elementary** – Completed foundations
- **Ruth Hoppin Elementary** – Began load bearing walls
- **Ruth Hoppin Elementary** – Continued installation of fire alarm
- **Ruth Hoppin Elementary** - Completed underground plumbing
- **Ruth Hoppin Elementary** – Began site work

**Committee /
Board
Update
August 2,
2021**



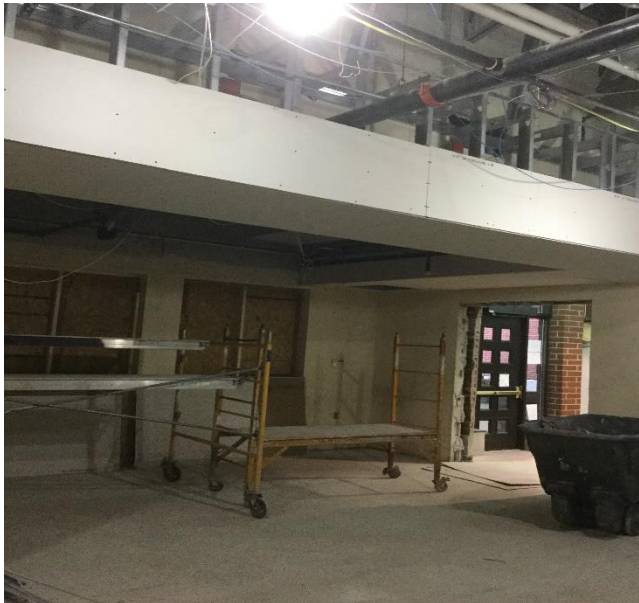
**Three Rivers
Community
Schools**

High School Progress Photos

**New Weight Room
Interior West CMU
Walls**



**Administration
Office – Reception
Area**



The SKILLMAN Corporation
Project Administration
Construction Management

**Three Rivers
Community
Schools**

Andrews & Norton Progress Photos

**Andrews
Classroom
'Addition' Deck
Framing**



Norton Shoring

**Committee /
Board
Update
August 2,
2021**



The SKILLMAN Corporation
Project Administration
Construction Management

**Three Rivers
Community
Schools**

Park & Ruth Hoppin Progress Photos

**Park Elementary
Parking Lot Curbs**



**Ruth Hoppin
Office Addition CMU**



The SKILLMAN Corporation
Project Administration
Construction Management

High School New Weight Room

Four-Week Look Ahead

- **Weight Room** - Complete CMU Masonry Walls
- **Weight Room** – Complete steel joists and decking
- **Weight Room** - Complete roof installation
- **Administration Office** - Complete hanging and finishing drywall
- **Administration Office** – Complete wall coverings
- **Administration Office** – Complete bathroom tile in F-108
- **Administration Office** – Pulling wire for lighting
- **Administration Office** - Continue ceiling grid installation
- **Administration Office** – Begin installing flooring
- **Administration Office** – Begin installing new hydronic pumps in the boiler room.
- **Administration Office** – Complete installing fire suppression
- **Administration Office** – Complete installing fire alarm

**Committee /
Board
Update
August 2,
2021**



Andrews & Norton Elementary Schools Four-Week Look Ahead

- **Andrews Elementary** – Install new windows
- **Andrews Elementary** - Install sidewalks
- **Andrews Elementary** - Install asphalt
- **Andrews Elementary** - Finish framing front offices
- **Andrews Elementary** – Install all fire rated frames
- **Andrews Elementary** - Pour footings for steel columns
- **Andrews Elementary** - Complete fan coil unit rough-ins
- **Andrews Elementary** – Install fan coil units
- **Norton Elementary** - Cut exterior window opening for secure entry
- **Norton Elementary** - Build new metal stud walls
- **Norton Elementary** – Install new steel beams
- **Norton Elementary** - Rough-in electric
- **Norton Elementary** - Rough-in plumbing
- **Norton Elementary** - Patch floor
- **Norton Elementary** - Install casework
- **Norton Elementary** – Install fan coil units

**Committee /
Board
Update
August 2,
2021**



Park & Ruth Hoppin Elementary Schools

Four-Week Look Ahead

- **Park Elementary** – Complete paint in the office and conference room
- **Park Elementary** - Install doors
- **Park Elementary** - Prep and install flooring
- **Park Elementary** – Complete sitework
- **Ruth Hoppin** – Complete installing CMU walls
- **Ruth Hoppin** – Begin installing exterior brick
- **Ruth Hoppin** – Erect interior structural steel
- **Ruth Hoppin** – Erect exterior (addition) structural steel
- **Ruth Hoppin** - Complete fire alarm
- **Ruth Hoppin** – Complete site work

**Committee /
Board
Update
August 2,
2021**



**Three Rivers
Community
Schools**

Questions?

**Committee /
Board
Update
August 2,
2021**



The SKILLMAN Corporation
Project Administration
Construction Management