



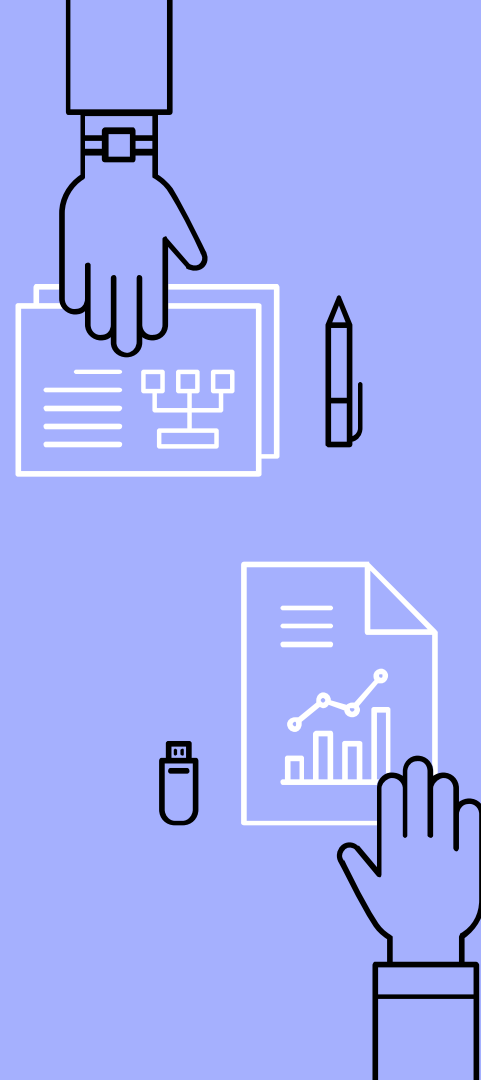
THREE RIVERS COMMUNITY SCHOOLS

2024-25 Spring Data Review End of the Year Progress Report

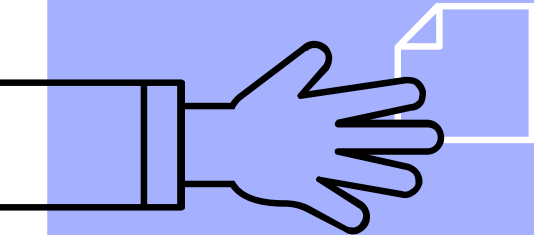
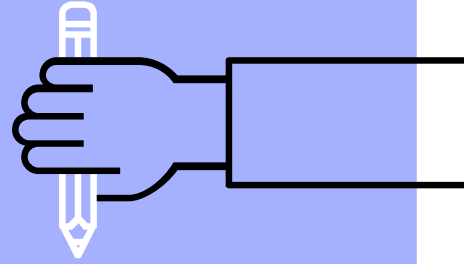
June 16, 2025

Contents

- ▶ 2024 NWEA Assessment: Achievement
 - Math, Reading, Language
 - Elementary
 - Middle School
 - High School



NWEA Data



Benchmark Testing Overview

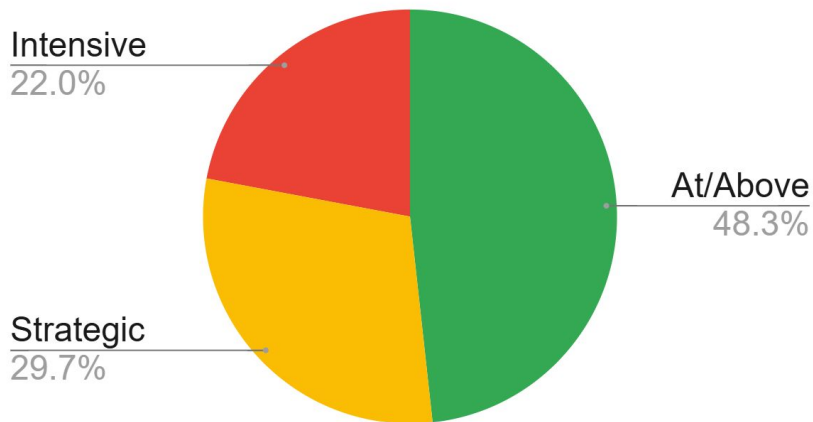
- Fall, Winter, Spring Testing
 - Goal is to improve performance; will be determined from baseline data
 - Goal Statement - All students PK-Kindergarten will improve performance in literacy foundational skills according to DIBELS assessment.
 - Goal Statement - All students 1st-12th grade will improve performance in ELA (Reading and Language Development) and Math from Fall to Winter as measured by NWEA.
 - Y5/Kindergarten = Acadience ELA & NWEA Math
 - 1st grade = Reading & Math
 - 2nd-11th grade = Reading, Language Development, Math

NWEA GUIDE TO COLOR CODING AND ACHEIVEMENT

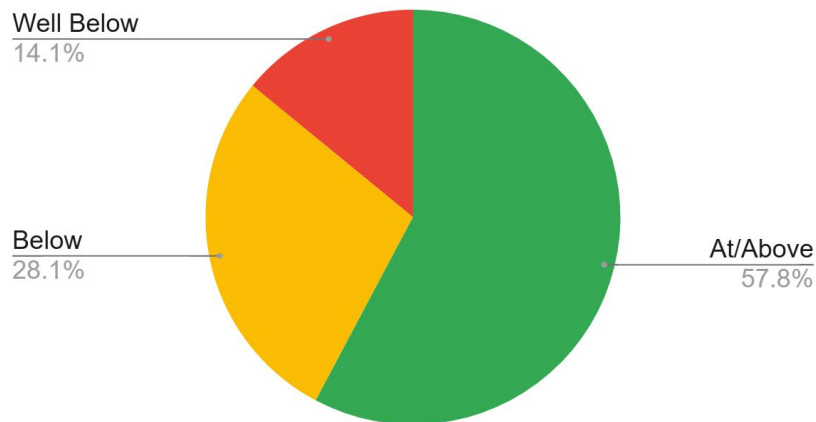


Y5s/Kindergarten - Acadience Achievement (Reading)

Young 5s



Kindergarten



Y5s			
Goal Reporting	% intensive	% strategic	% benchmark
Beginning of the Year Data	59%	30%	11%
End of the Year Data	22%	22%	48%

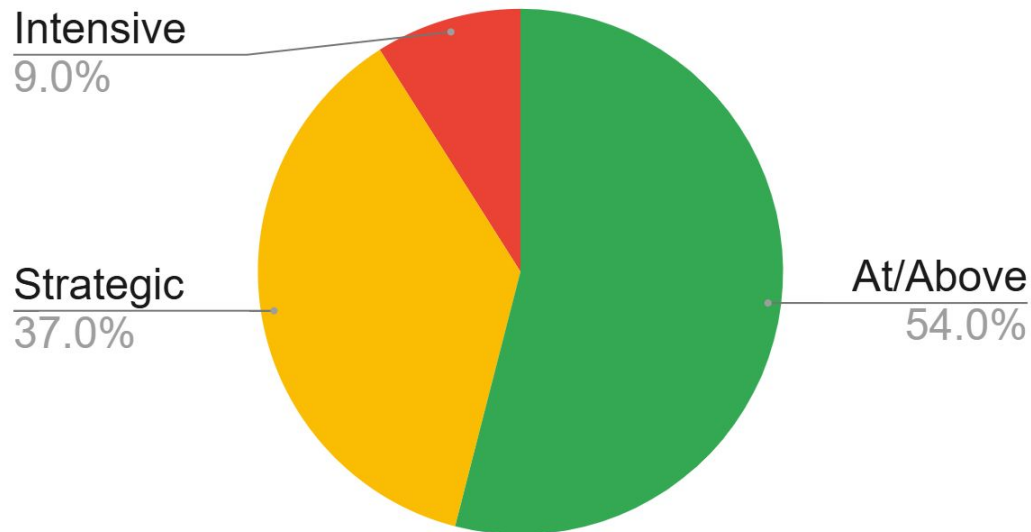
Kindergarten			
Goal Reporting	% intensive	% strategic	% benchmark
Beginning of the Year Data	45%	15%	40%
End of the Year Data	14%	28%	58%

Celebrations

Our students made great growth, and Y5s did very well this year.

Y5s/Kindergarten Math

Y5/Kindergarten



Celebrations

Moved up 29% of our students upward to from Intensive.

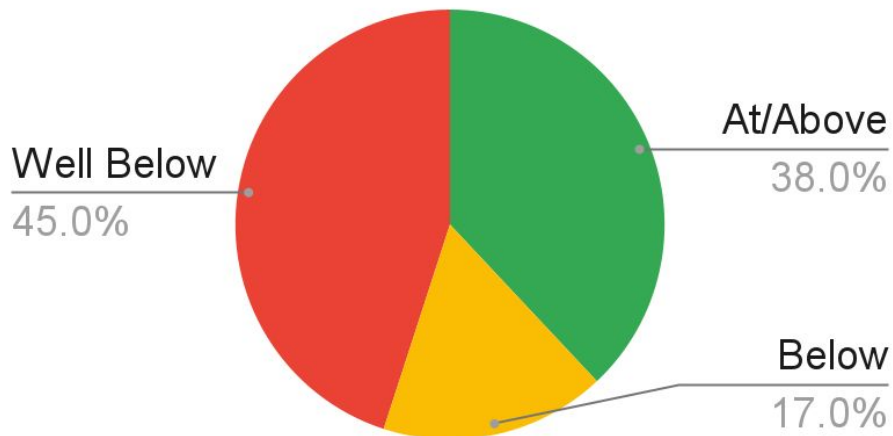
Focus Areas

Continue to show upward progress in 1st Grade.

Kindergarten			
Goal Reporting	% intensive	% strategic	% benchmark
Beginning of the Year Data	38%	20%	42%
Middle of the Year Data	9%	37%	54%

1st Grade - Acadience Achievement - Reading

1st Grade



Celebrations

Students continue steady progress in 1st grade reading.

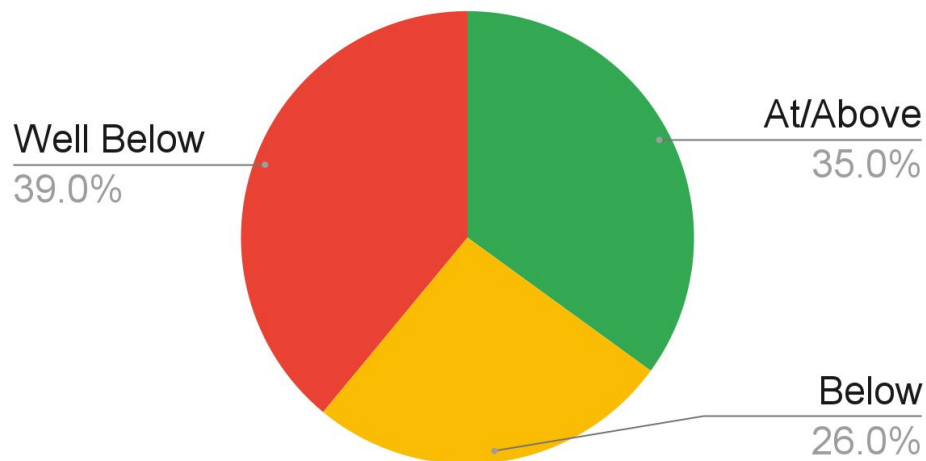
Challenges

We are not seeing as many students at Benchmark as we would like to see. We are making changes with our Tier I instruction 2025-26.

1st Grade			
Goal Reporting - DIBELS	% intensive	% strategic	% benchmark
Beginning of the Year Data	49%	20%	31%
End of the Year Data	45%	17%	38%

1st Grade - NWEA Achievement - Math

1st Grade



Celebrations

Moved 10% out of intensive

Focus Areas

Continue to show upward progress

1st Grade			
Goal Reporting	% intensive	% strategic	% benchmark
Beginning of the Year Data	49%	20%	31%
End of the Year Data	39%	26%	35%

2nd-5th

2nd Grade		At/Above
Rdg.	Fall	43%
	Winter	43%
	Spring	45%
Lang.	Fall	36%
	Winter	44%
	Spring	43%
Math	Fall	48%
	Winter	51%
	Spring	63%
2nd Grade		
Avg. Maintain & Grow		
Rdg.	Winter	49%
Rdg.	Spring	38%
Lang.	Winter	47%
Lang.	Spring	43%
Math	Winter	57%
Math	Spring	57%

3rd Grade		At/Above
Rdg.	Fall	58%
	Winter	62%
	Spring	63%
Lang.	Fall	56%
	Winter	60%
	Spring	58%
Math	Fall	53%
	Winter	72%
	Spring	80%
3rd Grade		
Avg. Maintain & Grow		
Rdg.	Winter	67%
Rdg.	Spring	53%
Lang.	Winter	63%
Lang.	Spring	50%
Math	Winter	78%
Math	Spring	61%

4th Grade		At/Above
Rdg.	Fall	57%
	Winter	64%
	Spring	63%
Lang.	Fall	55%
	Winter	52%
	Spring	56%
Math	Fall	55%
	Winter	65%
	Spring	72%
4th Grade		
Avg. Maintain & Grow		
Rdg.	Winter	66%
Rdg.	Spring	55%
Lang.	Winter	60%
Lang.	Spring	53%
Math	Winter	73%
Math	Spring	64%

5th Grade		At/Above
Rdg.	Fall	65%
	Winter	60%
	Spring	61%
Lang.	Fall	60%
	Winter	57%
	Spring	57%
Math	Fall	51%
	Winter	60%
	Spring	63%
5th		
Avg. Maintain & Grow		
Rdg.	Winter	48%
Rdg.	Spring	58%
Lang.	Winter	61%
Lang.	Spring	57%
Math	Winter	59%
Math	Spring	78%

Celebrations

Achievement in Math in 3rd and 4th Grade is good for end of the year.

Spring Growth in 5th Grade is very good!

Challenge

Reading in Tier I continues to be a challenge. We are making changes with our Tier I instruction 2025-26.

Middle School

6th		At/Above
Rdg.	Fall	53%
	Winter	55%
	Spring	53%
Lang.	Fall	62%
	Winter	60%
	Spring	57%
Math	Fall	51%
	Winter	57%
	Spring	72%
6th		
Avg. Maintain & Grow		
Rdg.	Winter	65%
Rdg.	Spring	47%
Lang.	Winter	59%
Lang.	Spring	53%
Math	Winter	64%
Math	Spring	85%

7th		At/Above
Rdg.	Fall	49%
	Winter	57%
	Spring	47%
Lang.	Fall	53%
	Winter	54%
	Spring	48%
Math	Fall	55%
	Winter	60%
	Spring	60%
7th		
Avg. Maintain & Grow		
Rdg.	Winter	62%
Rdg.	Spring	46%
Lang.	Winter	60%
Lang.	Spring	49%
Math	Winter	63%
Math	Spring	58%

8th		At/Above
Rdg.	Fall	51%
	Winter	58%
	Spring	51%
Lang.	Fall	66%
	Winter	66%
	Spring	61%
Math	Fall	55%
	Winter	70%
	Spring	62%
8th		
Avg. Maintain & Grow		
Rdg.	Winter	61%
Rdg.	Spring	47%
Lang.	Winter	68%
Lang.	Spring	48%
Math	Winter	74%
Math	Spring	52%

Celebrations

We have tried some different non-fiction reading strategies building-wide 2nd semester as a School Improvement strategy and we will continue.

Excellent growth in 6th Grade math.

Focus Areas

Implementation of Study Island as a differentiated intervention for 6th - 8th grade. Continue to focus on instructional practices.

High School

9TH		At/Above
Reading	Fall	63%
	Winter	67%
	Spring	62%
Language	Fall	64%
	Winter	66%
	Spring	65%
Math	Fall	67%
	Winter	64%
	Spring	69%
9TH		
Avg. Maintain & Grow		
Read	Winter	62%
Read	Spring	64%
Lang.	Winter	71%
Lang.	Spring	73%
Math	Winter	57%
Math	Spring	74%

10TH		At/Above
Reading	Fall	41%
	Winter	47%
	Spring	41%
Language	Fall	53%
	Winter	53%
	Spring	54%
Math	Fall	49%
	Winter	55%
	Spring	60%
10TH		
Avg. Maintain & Grow		
Read	Winter	66%
Read	Spring	65%
Lang.	Winter	59%
Lang.	Spring	70%
Math	Winter	65%
Math	Spring	75%

11TH		At/Above
Reading	Fall	33%
	Winter	36%
	Spring	N/A
Language	Fall	46%
	Winter	46%
	Spring	N/A
Math	Fall	53%
	Winter	59%
	Spring	N/A
11TH		
Avg. Maintain & Grow		
Read	Winter	66%
Read	Spring	0%
Lang.	Winter	63%
Lang.	Spring	0%
Math	Winter	68%
Math	Spring	0%

Celebrations

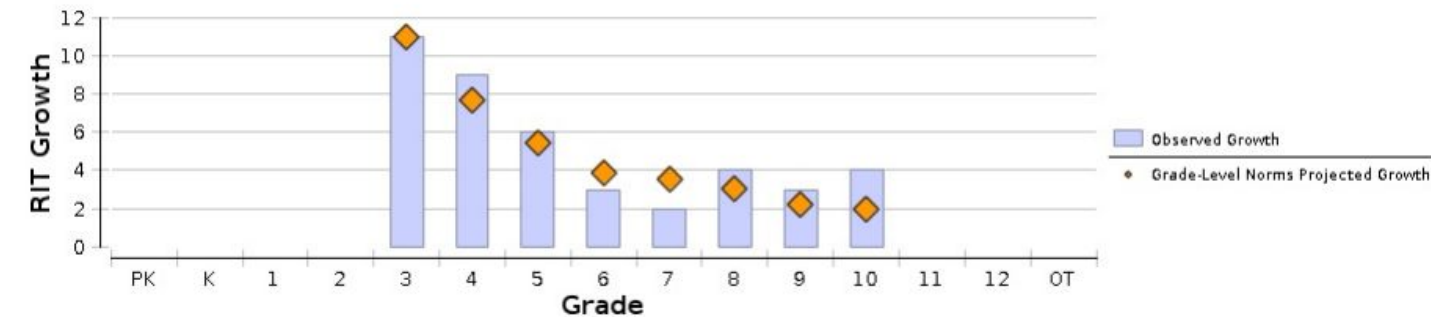
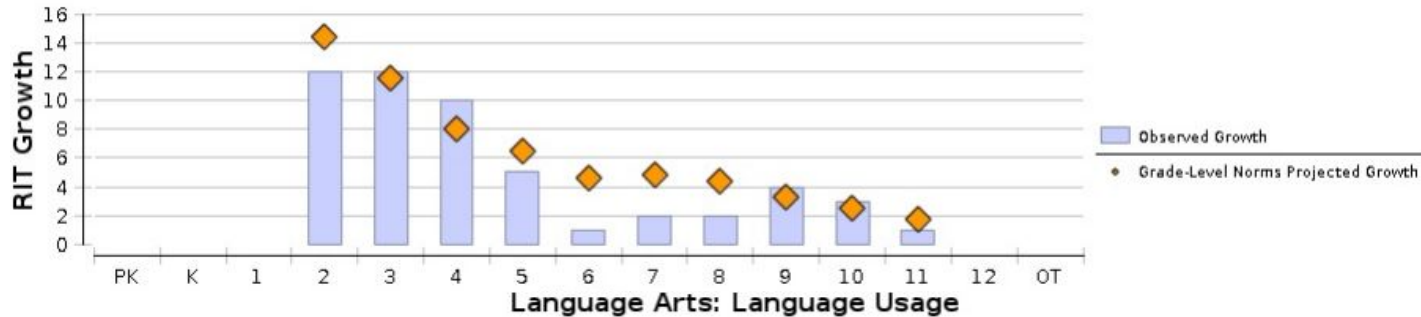
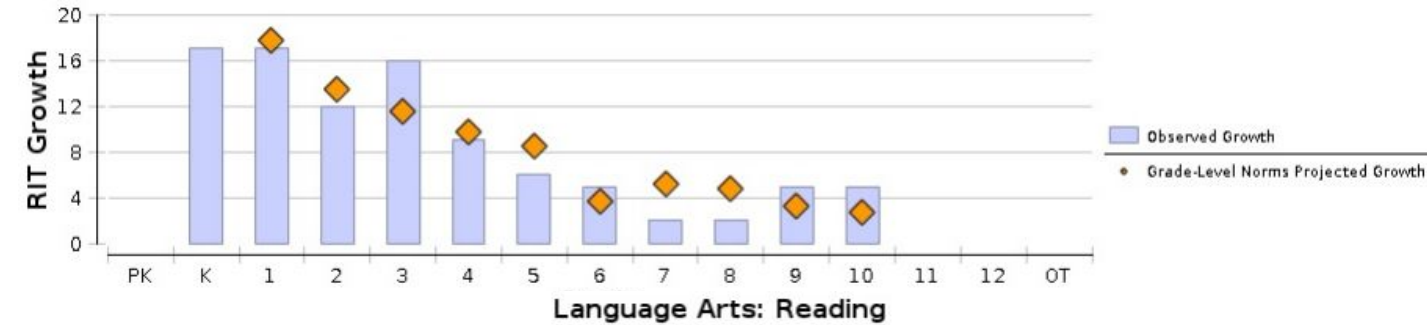
Students either maintain or continue to increase in academic achievement in all areas.

Excellent growth in 9th and 10th Grade in all areas.

Focus Areas

Continue to monitor student success and intervene with individuals.

Math: Math K-12



SUMMARY of GROWTH Spring to Spring

Celebration

- 1st, 3rd, 4th, 6th, 9th, 10th Grades exceeded expectations in Math
- 3rd, 4th, 9th, 10th Grades exceed expectations in Reading
- All except 6th and 7th exceed expectations in Language Usage

Focus Areas

- 2nd, 5th, 7th, and 8th were below expectations in Math
- 2nd and Middle School were below expectations in Reading
- 6th and 7th were below expectations in Language Usage

What questions might you have?

